



PORT COLBORNE

CITYHALLNEWS

A newsletter written by Staff for the Residents of Port Colborne

MARCH 2021

66 Charlotte Street, Port Colborne, ON L3K 3C8 | 905-835-2900 | portcolborne.ca | newsletter@portcolborne.ca

@cityofportcolborne @portcolborne @cityofportcolborne @cityofportcolborne @cityofportcolborne

REOPENING PORT COLBORNE

Effective February 16, Port Colborne along with the Niagara region, moved to Grey-Lockdown under the Keeping Ontario Safe and Open Framework. As Niagara begins to reopen after the stay-at-home order, we will work with Niagara Region Public Health to communicate new reopening updates as they become available.



Ontario is transitioning 27 public health regions to the COVID-19 Response Framework.

Learn more about the public health measures in your region.



Have a Question? We're Here to Help!

The City of Port Colborne is committed to ensuring the health and safety of residents and staff, while continuing to provide customer service to the community. Although the physical doors to City Hall and City facilities remain closed, or are offering limited services, staff are continuing to offer customer service support for residents, businesses, and visitors by phone, email, website, and social media channels. To reach our customer service representatives, Monday - Friday, 8:30 a.m. - 4:30 p.m., call [905-835-2900](tel:905-835-2900) or email customerservice@portcolborne.ca. Looking for a particular staff member? Visit www.portcolborne.ca/contact. For more information and updates about the City's response to COVID-19, visit www.portcolborne.ca/covid19.

Order Under Section 22 of the Health Protection and Promotion Act

When food services are permitted to reopen in Niagara, local restaurants, bars, wineries, breweries, and other food and beverage service operators will once again be asking for information including if diners have any symptoms of illness. They will also ask diners to confirm that they are dining only with members of their immediate household or persons essential to maintaining physical and mental health.

Resilient Port Colborne

Shop Local - Support Local

With many businesses offering online shopping and curbside pickup, there are so many opportunities to continue to support local. Whether you're looking for a delicious take-out dinner or a unique gift, Port Colborne businesses have so much to offer. With 15-minute curbside pickup parking still implemented for businesses in the Downtown and Main Street areas, customers have access to parking for take-out or curbside pickup orders.



Food and drink premises will ask for confirmation of



- No symptoms of illness
- That you are dining with only members of your household and / or a maximum of two persons who are essential to maintaining physical and mental health (e.g. caregivers, social supports to someone who lives alone)

niagararegion.ca/COVID19

Stay healthy & safe while you #PORTicipate



Stay home if you are sick



Maintain two metres physical separation



Wash or sanitize hands frequently



PORT COLBORNE

CITYHALLNEWS

A newsletter written by Staff for the Residents of Port Colborne

MARCH 2021

66 Charlotte Street, Port Colborne, ON L3K 3C8 | 905-835-2900 | portcolborne.ca | newsletter@portcolborne.ca

@cityofportcolborne @portcolborne @cityofportcolborne @cityofportcolborne @cityofportcolborne

WHAT'S HAPPENING IN PORT COLBORNE

Free Non-Medical Masks Giveaway

Fire & Emergency Services will host its second non-medical mask giveaway.

As part of a generous donation from MedSup Canada to the Niagara Health Foundation, Niagara Region received more than five million non-medical masks for the community. These masks were distributed to municipalities, with Port Colborne receiving more than 60,000. City staff have already donated masks to community partners and 12,000 to residents, and have plans to distribute thousands more.

Date: Tuesday, March 9, 2021 • **Time:** 4 – 6 p.m.

Cost: Free

Where: Fire Station, 3 Killaly Street West

What: Handing out non-medical masks to residents; one package (50 masks) per household.

For more information feel free to call Fire & Emergency Services at [905-834-4512](tel:905-834-4512).



Top Hat Ceremony

A favourite tradition for the City of Port Colborne will take on a virtual approach this year. To officially open the Welland Canal on March 19, the City will celebrate in socially distanced safe ways, including:

- Top Hat Craft Kits available at the Library
- History video posted by the Museum
- Social Media Contest

Due to current restrictions, there will be no live event. Stay tuned to the City's social media channels on March 19



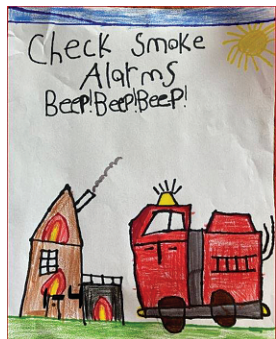
for a Top Hat message from the Mayor, Town Crier and a word from your Fair Trade Committee.

Congratulations to the Fire Safety Poster Winners

With more than 100 entries, the community voted and the winners are:

Dallas - Grades K - 3 • Landon - Grades 4 - 8

Both artists are from St. Bosco School. The winners and their families enjoyed pizza and wings from Super Mario's Pizza and a cake from Sobeys. Fire & Emergency Services would like to thank everyone who submitted a poster. Stay tuned for more fire safety craft activities.



CLEAN Drinking Water

The City of Port Colborne is committed to CLEAN drinking water.

We own, operate and maintain the Port Colborne water distribution system. Here's what we guarantee:

- C** - Consistent compliance with legislation
- L** - Listening & communicating with the public regarding water
- E** - Establishing a Quality Management System that's always improving
- A** - Allowing only the safest water to reach your tap
- N** - Necessity of life, the highest quality

For more information and to read the Annual Drinking Water Quality Report please visit www.portcolborne.ca/water

Cruise Ship Initiatives

Establishing Port Colborne as a key port for Great Lakes cruising.

To continue to build and foster a community of economic growth and development, the City of Port Colborne is working collaboratively with affiliated stakeholders, the St. Lawrence Seaway and cruise ship partners to establish Port Colborne as a key port of calling for Great Lakes cruising. This year we are building a strategic and sustainable operational plan for the 2022 season and beyond. City Council will receive a cruise ship destination strategy and business case that will include an overview of what the City can do to support and benefit from this cruise ship initiative. This is a very exciting time for the City of Port Colborne, with many opportunities to build on existing infrastructure to enable us to take tourism to the next level.





PORT COLBORNE
• PUBLIC LIBRARY •

CITYHALLNEWS

A newsletter written by Staff for the Residents of Port Colborne

MARCH 2021

310 King Street, Port Colborne, ON L3K 4H1 | 905-834-6512 | www.portcolbornelibrary.org



@PortColbornePublicLibrary



@PortColborneLib



@PortColborneLib



PortColbornePublicLibrary

Temporary Hours

Monday - Saturday | 9 a.m. - 5 p.m.

Library staff are onsite to answer your phone calls and to schedule curbside pickup.

Please note the following:

- The book drop is open 24/7 to return your books and library materials
- All returns will be quarantined for 96 hours
- All fines will be waived on items due during the closure
- If you don't have a library card, visit our website to register online
- There are currently no in-person programs or meetings
- If you need help, please call or email us and we will respond to your questions as soon as possible. Stay safe! We will see you soon.

Curbside pickup is available Monday to Saturday, 11 a.m. – 3 p.m. For more information visit, www.portcolbornelibrary.org.

Computer Services & Printing

WiFi is available 24/7.

Need something printed? We can help!

Contact us at: library@portcolborne.ca or 905-834-6512 for curbside pickup.

E-Resources

Did you know you can access free ebooks, audiobooks, online courses, digital magazines and videos through your Port Colborne Public Library? All you need is a library card.

Exploring the Birds of Ontario with David T. Chapman

Starting March 8 via the Port Colborne Public Library's YouTube Channel

If you enjoy bird watching, then this is the presentation for you! Everything from the small backyard visitors that we all know and love, to some of the largest birds like the Bald Eagle and Great Blue Heron. Check out rare visitors to our area like the painted bunting and northern hawk owl. Watch an owl family grow up and leave the nest. Learn how you can enhance your birding experience.

See both still images and video of these fascinating and colourful characters and more.



Take & Make Family Crafts

Check out this month's free family craft kits available at the Library. All craft kits have been quarantined for four days and were packed by staff wearing gloves. Call to reserve your kit: 905-834-6512.

Available while supplies last!

March 5 - Bug on a Leaf (Ages 4 – 8)

March 12 - Mosaic Shamrocks (Ages 4 – 8)

March 19 - Seed Bombs (Ages 9 and up)

March 26 - Easter Egg Chicks (Ages 4 – 8)



Don't Judge a Book by Its Cover!

Free surprise bags of gently used books are back.

Call the library to reserve yours: 905-834-6512.

Available while supplies last. One per household.

Fire Safety Activity Bags

Available March 1

Get your free fire safety activity bag! It has games, crafts, activities and more. Thank you to our friends at Port Colborne Fire & Emergency Services for putting this together. Available while supplies last.

Teen Community Service Hours

High school students can read books and write reviews for our website and social media accounts. Each approved book review will earn five hours of community service!

For more information on how to register, please email: library@portcolborne.ca.

Top Hat Craft

Available March 1 & great for all ages

Every year we celebrate the official opening of the Welland Canal with a Top Hat Ceremony. This year, pick up your free craft kit to make your very own top hat! Call the library to learn more: 905-834-6512.



PORT COLBORNE
- HISTORICAL & MARINE MUSEUM -

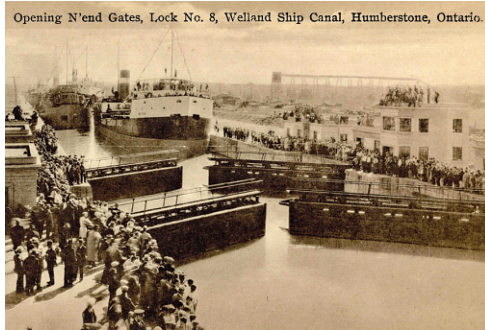
CITYHALLNEWS

A newsletter written by Staff for the Residents of Port Colborne

MARCH 2021

280 King Street, Port Colborne, ON L3K 5X8 | 905-834-7604 | <http://portcolborne.ca/page/museum>

@PortColborneHistoricalMarineMuseum @PortMuseum @portcolbornemuseum



Opening N'end Gates, Lock No. 8, Welland Ship Canal, Humberstone, Ontario. PCHMM 982.47.20



Two Steamships in the locks just south of the railroad bridge at Port Colborne, c.1920. PCHMM 2007.5.42

Archives Speakers' Series

The Speakers' Series is going online in 2021.

To mark the opening of the 2021 season of the Welland Canal, on March 17 at 7 p.m., Abbey Stansfield will be presenting the Museum's new online exhibit, Port Colborne and the Welland Canals. This exhibit showcases the relationship between Port Colborne and the canals.

The images here, which will be highlighted in Abbey's presentation, are of the opening of Lock 8 at Humberstone in September 1929. While the Fourth Welland Canal was not fully completed until 1932, the section at Port Colborne and Humberstone was in operation three years before, beginning in September 1929. The ship Meaford was the first vessel through the lock. The ship was downbound to Lake Ontario. Lock 8 is one of the longest locks in the world at 420.6 meters (1380 feet).

A regulating lock, it raises or lowers ships 0.3 to 1.2 meters (1 to 4 feet) depending on the fluctuating levels of Lake Erie. Port Colborne Historical & Marine Museum 982.47.20

Interested in learning more Port Colborne history?

On April 8, at 7 p.m. Michelle Vosburgh will present research on past epidemics and pandemics in "Resilient Community: Epidemics in Port Colborne's Past." Information on how to register for these presentations will be on the museum's social media channels.

Full Steam Ahead!

The Membership Committee has exciting news.

Thanks to sponsorship from Bell Marine, all residents of Port Colborne and Wainfleet who wish to become Museum Members can do so free in 2021. Bell Marine, the oldest chandler on the Great Lakes, has contributed the cost of membership fees so that citizens can join the museum at no personal cost. Membership includes: an individual or family membership card, advanced notice of activities through newsletters, and 10% off on the Museum gift shop and Archives publications.



PORT COLBORNE HISTORICAL AND MARINE MUSEUM

P.O. BOX 572, 280 KING STREET, PORT COLBORNE, ON L3K 5X8

APPLICATION FOR MEMBERSHIP AND/OR DONATION

Name _____

Address _____

_____ Postal Code _____

Please make cheques payable to : PORT COLBORNE MUSEUM

Membership Categories:

Student / Sr. Citizen
Individual
Family
No. in Family _____

Membership Benefits

Free Admission to Museum Events
Receipt of Museum Newsletters
Advance Notice of Special Events
10% Discount at Museum Gift Shop
Membership Card

Yes, I would like to receive the newsletter to the email address below:

Donation: Amount \$ _____

Donation of \$20 or more will receive an Income Tax Receipt, if requested

Donation of \$100 or more will receive
- Membership Benefits
- Income Tax Receipt
- Certificate and Name on Plaque

I would like to be contacted about being a monthly donor

How to join

Fill out the following card
and mail it into:

Port Colborne Museum
P.O. Box 572
Port Colborne,
ON L3K 5X8

Or email:

museum@portcolborne.ca

for a fillable membership form.