

PLAN LEGEND	
	BLACK CREEK DRAIN WATERSHED
	INTERMEDIATE WATERSHED
	DRAIN TO BE MAINTAINED
	EXISTING DRAINS
	DENOTES PROPERTY OWNERSHIP ON BOTH SIDES OF LOT LINE

DESIGNED BY: N.W.M.
 CHECKED BY: H.A.W.
 DRAWN BY: D.C.P.
 CHECKED BY: N.W.M.



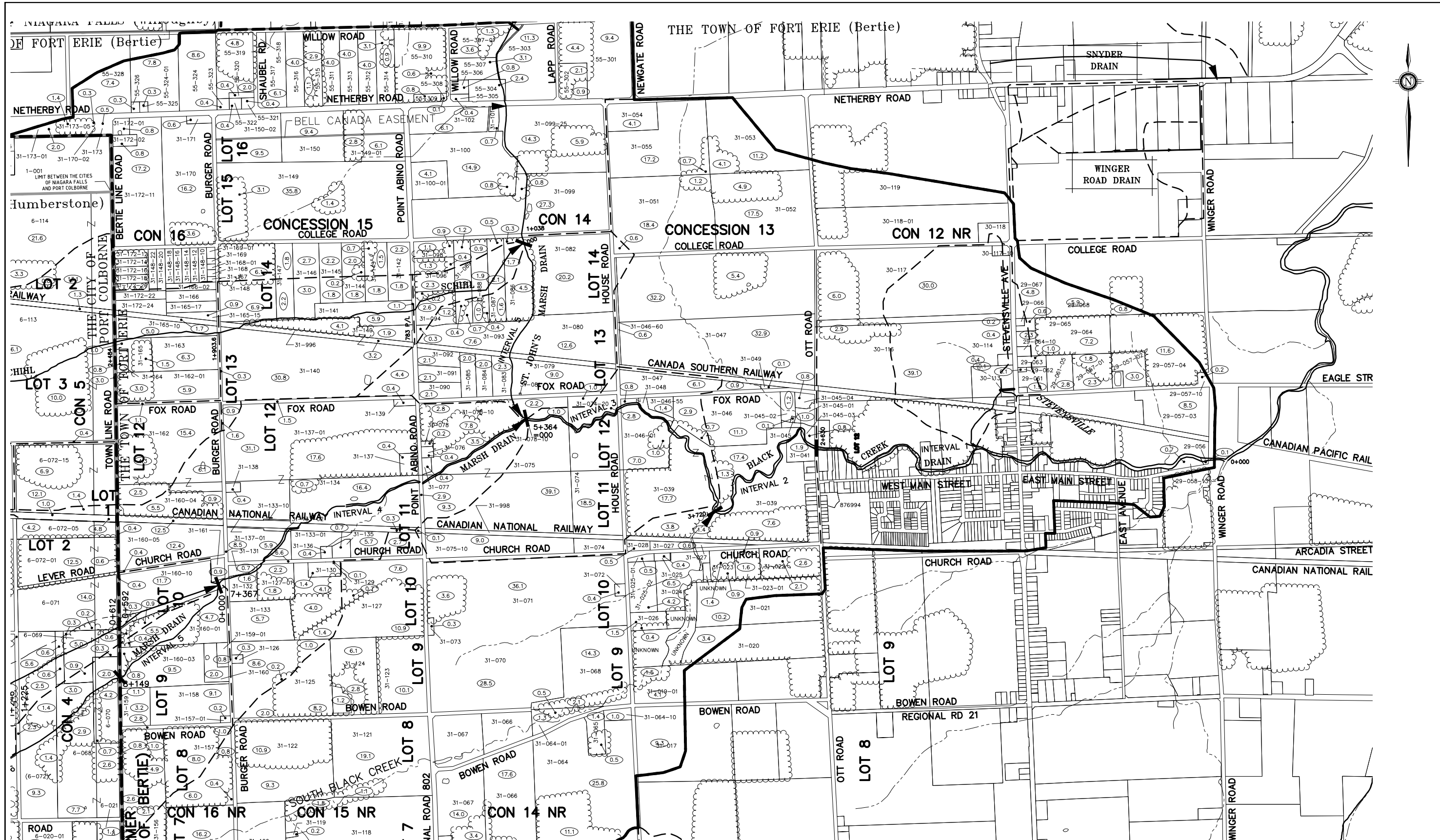
SCALE

 ORIGINAL SCALE
 PLAN 1:40,000

BLACK CREEK DRAINAGE WORKS
2014

REGION OF NIAGARA TOWN OF FORT ERIE
 CITY OF PORT COLBORNE

 K. SMART ASSOCIATES LIMITED CONSULTING ENGINEERS AND PLANNERS KITCHENER SUDBURY	REVISED:
	JOB NUMBER: 02-082
	DRAWING 1 OF 6



THE POSITION OF POLE LINES, CONDUITS, WATERMANS, SEWERS AND OTHER UNDERGROUND AND OVERGROUND UTILITIES AND STRUCTURES IS NOT NECESSARILY SHOWN ON THE CONTRACT DRAWINGS, AND, WHERE SHOWN, THE ACCURACY IS NOT GUARANTEED. BEFORE STARTING WORK, THE CONTRACTOR SHALL INFORM HIMSELF OF THE EXACT LOCATION OF ALL SUCH UTILITIES AND STRUCTURES, AND SHALL ASSUME ALL LIABILITY FOR DAMAGE TO THEM.

NOTE: BASE MAPPING PROVIDED BY THE TOWN OF FORT ERIE

PLAN LEGEND	
.....	ACCESS
---	BLACK CREEK DRAIN WATERSHED
- - -	INTERMEDIATE WATERSHED
→	DRAIN TO BE MAINTAINED
- - -	EXISTING DRAIN
—Z—	DENOTES PROPERTY OWNERSHIP ON BOTH SIDES OF LOT LINE
(7.0)	APPROXIMATE HECTARES IN WATERSHED
6-038	ASSESSMENT ROLL NUMBER

DESIGNED BY: N.W.M.
 CHECKED BY: H.A.W.
 DRAWN BY: D.C.P.
 CHECKED BY: N.W.M.



SCALE
 0 200 400
 ORIGINAL SCALE
 PLAN 1:20,000

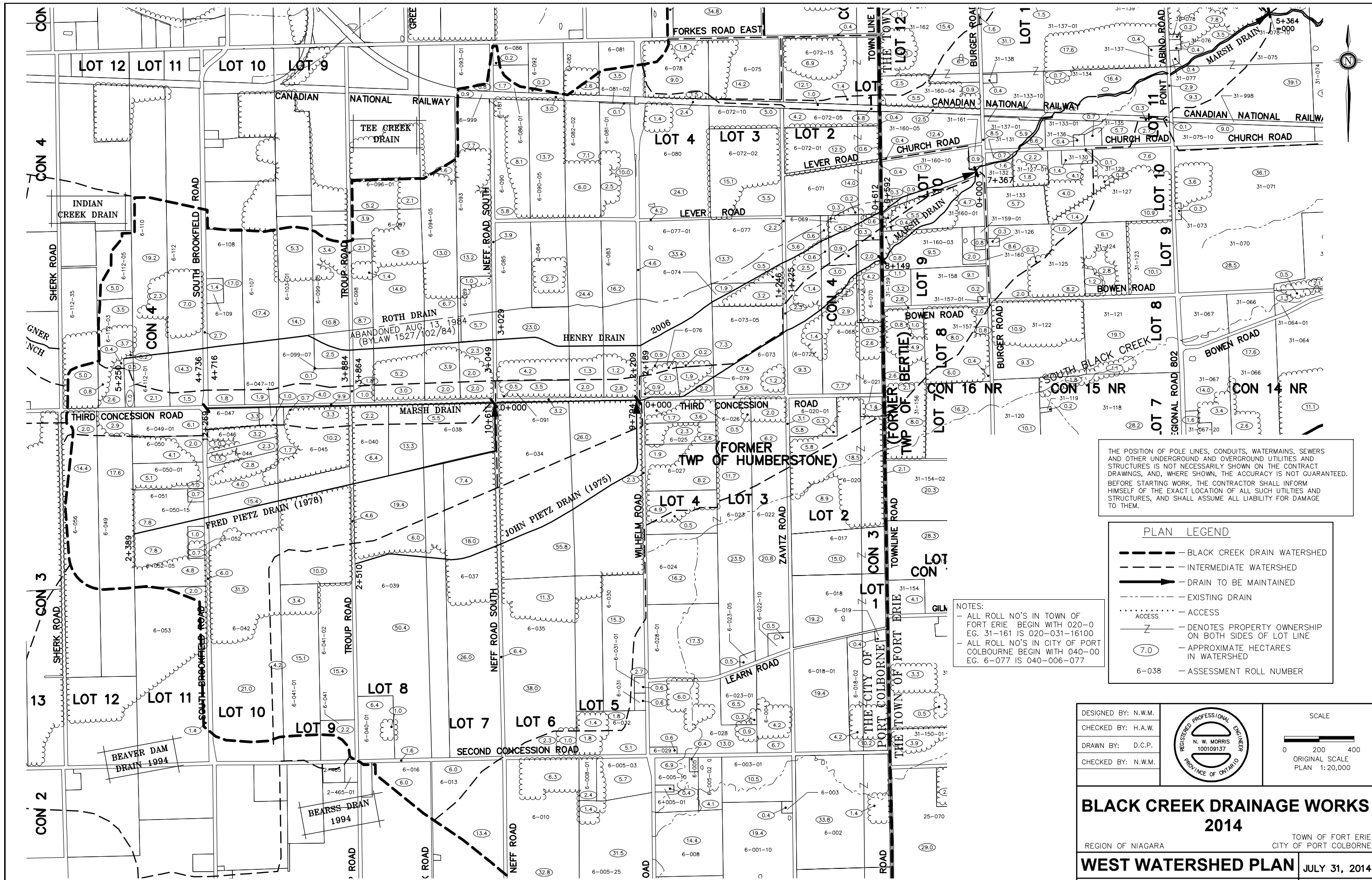
BLACK CREEK DRAINAGE WORKS 2014

REGION OF NIAGARA TOWN OF FORT ERIE
 CITY OF PORT COLBORNE

EAST WATERSHED PLAN

JULY 31, 2014
 REVISED:
 JOB NUMBER: 02-082
 DRAWING
 2 OF 6

K. SMART ASSOCIATES LIMITED
 CONSULTING ENGINEERS AND PLANNERS
 KITCHENER SUDBURY



THE POSITION OF POLE LINES, CONDUITS, WATERMANS, SEWERS AND OTHER UNDERGROUND AND OVERGROUND UTILITIES AND STRUCTURES IS NOT NECESSARILY SHOWN ON THE CONTRACT DRAWINGS, AND, WHERE SHOWN, THE ACCURACY IS NOT GUARANTEED. BEFORE STARTING WORK, THE CONTRACTOR SHALL INFORM HIMSELF OF THE EXACT LOCATION OF ALL SUCH UTILITIES AND STRUCTURES, AND SHALL ASSUME ALL LIABILITY FOR DAMAGE TO THEM.

PLAN LEGEND

- BLACK CREEK DRAIN WATERSHED
- INTERMEDIATE WATERSHED
- DRAIN TO BE MAINTAINED
- EXISTING DRAIN
- ACCESS
- DENOTES PROPERTY OWNERSHIP ON BOTH SIDES OF LOT LINE
- APPROXIMATE HECTARES IN WATERSHED
- ASSESSMENT ROLL NUMBER

NOTES:

- ALL ROLL NO'S IN TOWN OF FORT ERIE BEGIN WITH 020-0 EG. 31-161 IS 020-031-16100
- ALL ROLL NO'S IN CITY OF PORT COLBOURNE BEGIN WITH 040-00 EG. 6-077 IS 040-006-077

DESIGNED BY: N.W.M.		SCALE
CHECKED BY: H.A.W.		<p>ORIGINAL SCALE PLAN 1:20,000</p>
DRAWN BY: D.C.P.		
CHECKED BY: N.W.M.		

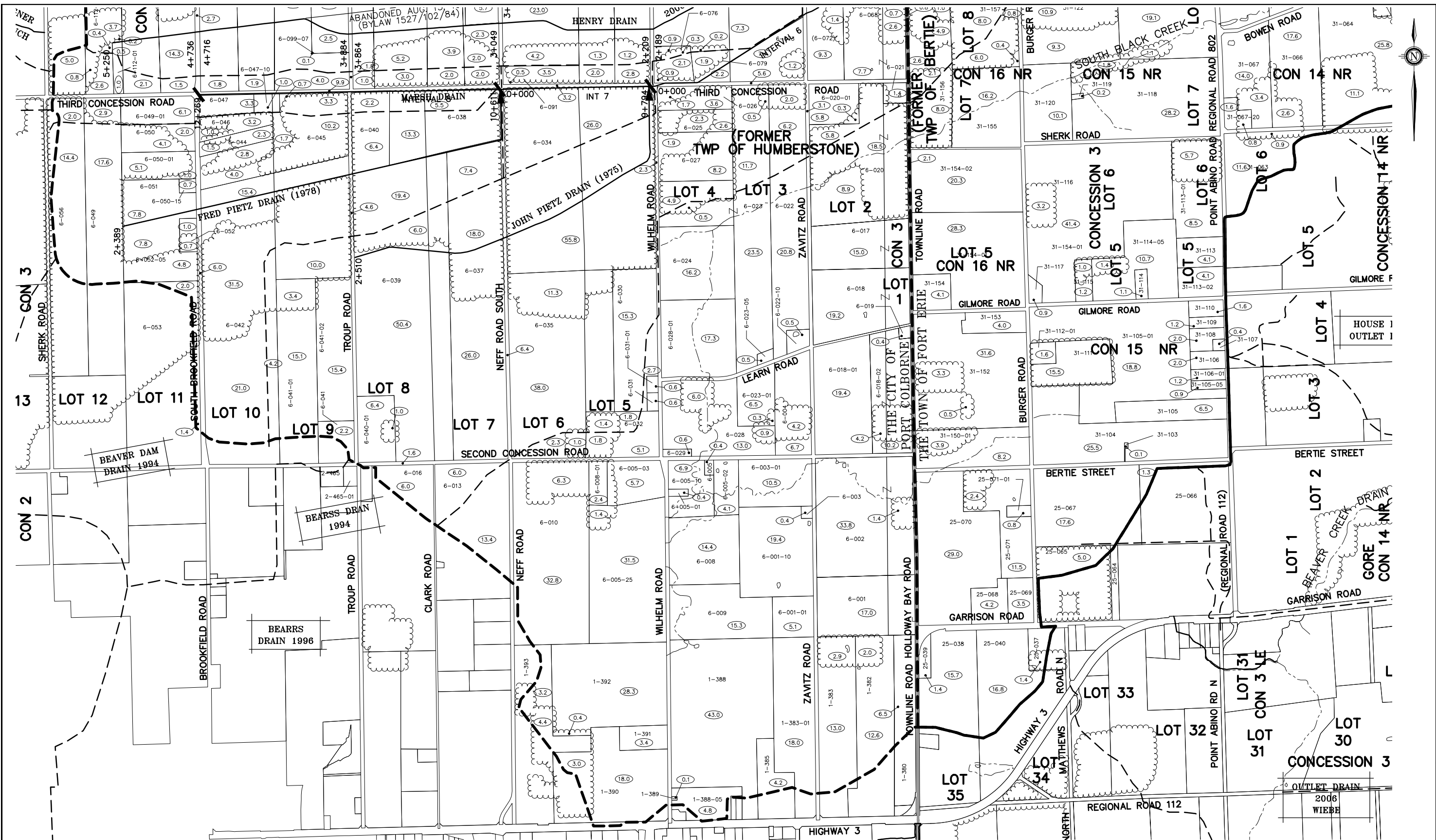
**BLACK CREEK DRAINAGE WORKS
2014**

REGION OF NIAGARA TOWN OF FORT ERIE
CITY OF PORT COLBOURNE

WEST WATERSHED PLAN **JULY 31, 2014**

<p>K. SMART ASSOCIATES LIMITED CONSULTING ENGINEERS AND PLANNERS KITCHENER SUDBURY</p>	REVISED:
	JOB NUMBER: 02-082
	DRAWING 3 OF 6

NOTE: BASE MAPPING PROVIDED BY THE TOWN OF FORT ERIE



THE POSITION OF POLE LINES, CONDUITS, WATERMAINS, SEWERS AND OTHER UNDERGROUND AND OVERGROUND UTILITIES AND STRUCTURES IS NOT NECESSARILY SHOWN ON THE CONTRACT DRAWINGS, AND, WHERE SHOWN, THE ACCURACY IS NOT GUARANTEED. BEFORE STARTING WORK, THE CONTRACTOR SHALL INFORM HIMSELF OF THE EXACT LOCATION OF ALL SUCH UTILITIES AND STRUCTURES, AND SHALL ASSUME ALL LIABILITY FOR DAMAGE TO THEM.

NOTE: BASE MAPPING PROVIDED BY THE TOWN OF FORT ERIE

PLAN LEGEND	
	BLACK CREEK DRAIN WATERSHED
	INTERMEDIATE WATERSHED
	DRAIN TO BE MAINTAINED
	EXISTING DRAIN
	ACCESS
	DENOTES PROPERTY OWNERSHIP ON BOTH SIDES OF LOT LINE
	APPROXIMATE HECTARES IN WATERSHED
	ASSESSMENT ROLL NUMBER

DESIGNED BY: N.W.M.
 CHECKED BY: H.A.W.
 DRAWN BY: D.C.P.
 CHECKED BY: N.W.M.



SCALE

 ORIGINAL SCALE
 PLAN 1:20,000

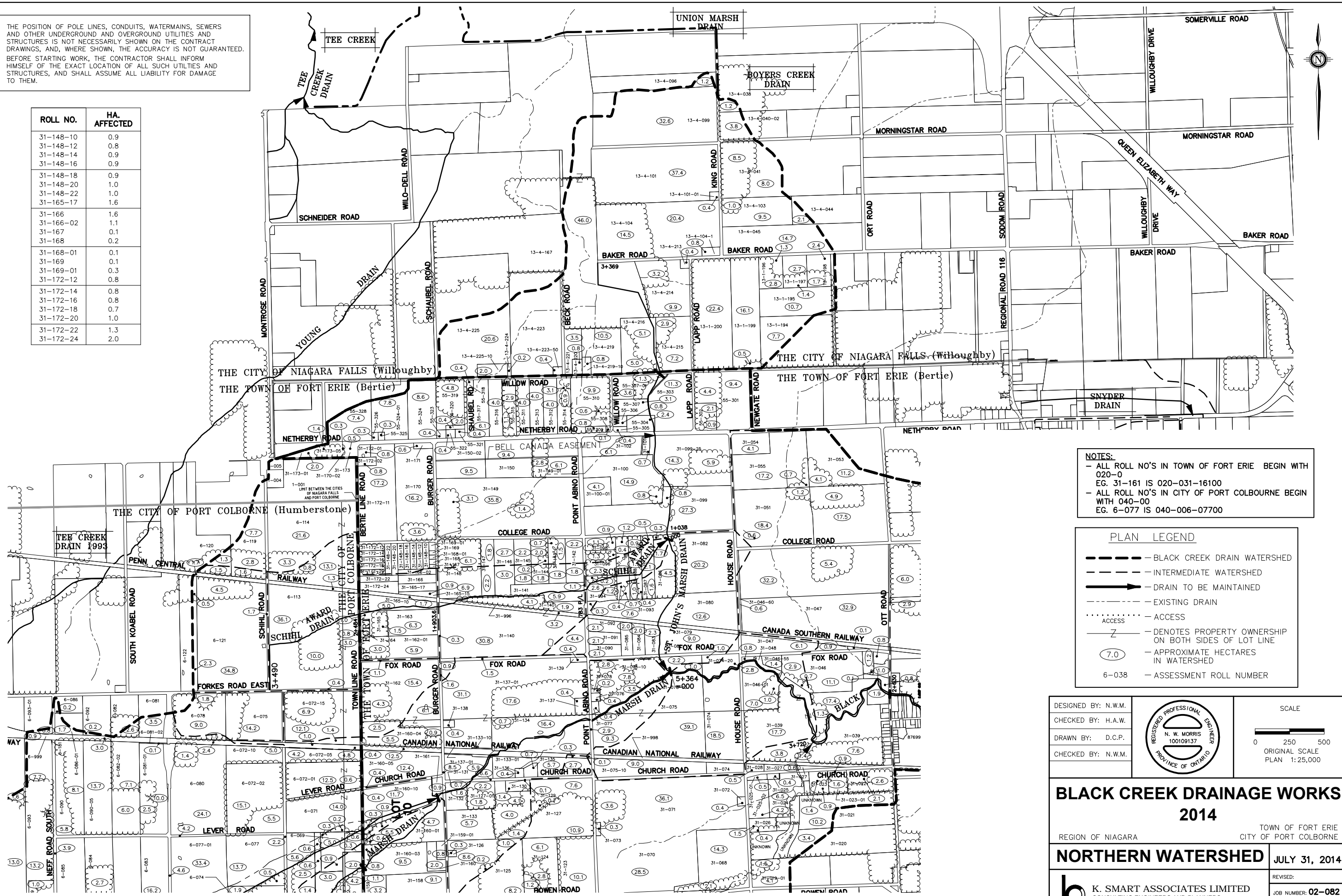
BLACK CREEK DRAINAGE WORKS 2014
 REGION OF NIAGARA TOWN OF FORT ERIE
 CITY OF PORT COLBORNE

SOUTHERN WATERSHED
 K. SMART ASSOCIATES LIMITED
 CONSULTING ENGINEERS AND PLANNERS
 KITCHENER SUDBURY

JULY 31, 2014
 REVISED:
 JOB NUMBER: **02-082**
 DRAWING
4 OF 6

THE POSITION OF POLE LINES, CONDUITS, WATERMANS, SEWERS AND OTHER UNDERGROUND AND OVERGROUND UTILITIES AND STRUCTURES IS NOT NECESSARILY SHOWN ON THE CONTRACT DRAWINGS, AND, WHERE SHOWN, THE ACCURACY IS NOT GUARANTEED. BEFORE STARTING WORK, THE CONTRACTOR SHALL INFORM HIMSELF OF THE EXACT LOCATION OF ALL SUCH UTILITIES AND STRUCTURES, AND SHALL ASSUME ALL LIABILITY FOR DAMAGE TO THEM.

ROLL NO.	HA. AFFECTED
31-148-10	0.9
31-148-12	0.8
31-148-14	0.9
31-148-16	0.9
31-148-18	0.9
31-148-20	1.0
31-148-22	1.0
31-165-17	1.6
31-166	1.6
31-166-02	1.1
31-167	0.1
31-168	0.2
31-168-01	0.1
31-169	0.1
31-169-01	0.3
31-172-12	0.8
31-172-14	0.8
31-172-16	0.8
31-172-18	0.7
31-172-20	1.0
31-172-22	1.3
31-172-24	2.0



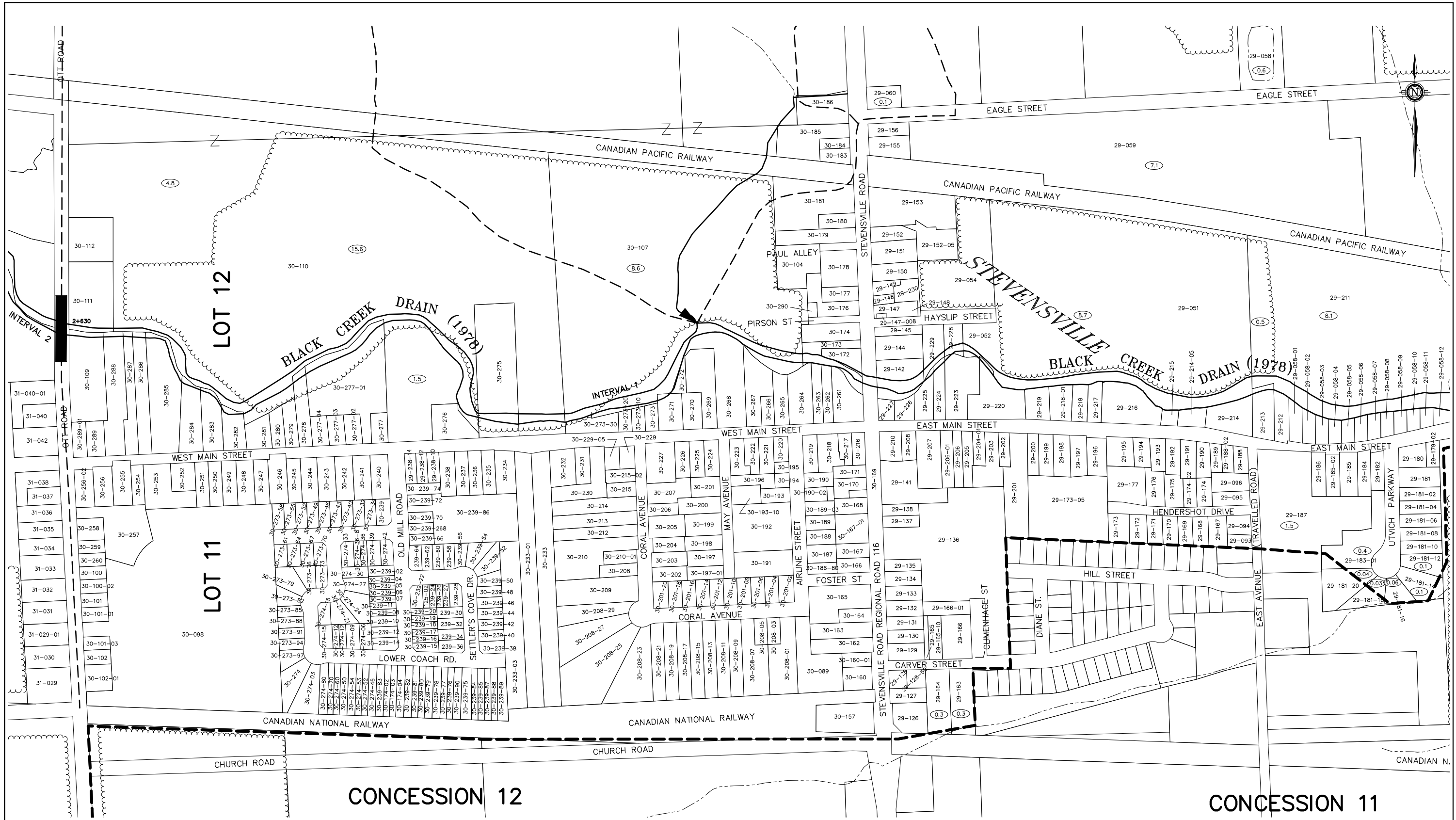
NOTES:
 - ALL ROLL NO'S IN TOWN OF FORT ERIE BEGIN WITH 020-0
 EG. 31-161 IS 020-031-16100
 - ALL ROLL NO'S IN CITY OF PORT COLBORNE BEGIN WITH 040-00
 EG. 6-077 IS 040-006-07700

PLAN LEGEND

- BLACK CREEK DRAIN WATERSHED
- INTERMEDIATE WATERSHED
- DRAIN TO BE MAINTAINED
- EXISTING DRAIN
- ... ACCESS
- Z DENOTES PROPERTY OWNERSHIP ON BOTH SIDES OF LOT LINE
- (7.0) APPROXIMATE HECTARES IN WATERSHED
- 6-038 ASSESSMENT ROLL NUMBER

DESIGNED BY: N.W.M.		SCALE
CHECKED BY: H.A.W.		0 250 500 ORIGINAL SCALE PLAN 1:25,000
DRAWN BY: D.C.P.		
CHECKED BY: N.W.M.		
BLACK CREEK DRAINAGE WORKS		
2014		
REGION OF NIAGARA		TOWN OF FORT ERIE CITY OF PORT COLBORNE
NORTHERN WATERSHED		JULY 31, 2014
	K. SMART ASSOCIATES LIMITED CONSULTING ENGINEERS AND PLANNERS KITCHENER SUDBURY	
	REVISED:	JOB NUMBER: 02-082
	DRAWING	5 OF 6

NOTE: BASE MAPPING PROVIDED BY THE TOWN OF FORT ERIE

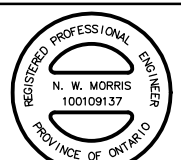


THE POSITION OF POLE LINES, CONDUITS, WATERMANS, SEWERS AND OTHER UNDERGROUND AND OVERGROUND UTILITIES AND STRUCTURES IS NOT NECESSARILY SHOWN ON THE CONTRACT DRAWINGS, AND, WHERE SHOWN, THE ACCURACY IS NOT GUARANTEED. BEFORE STARTING WORK, THE CONTRACTOR SHALL INFORM HIMSELF OF THE EXACT LOCATION OF ALL SUCH UTILITIES AND STRUCTURES, AND SHALL ASSUME ALL LIABILITY FOR DAMAGE TO THEM.

NOTE: BASE MAPPING PROVIDED BY THE TOWN OF FORT ERIE

PLAN LEGEND	
	BLACK CREEK DRAIN WATERSHED
	INTERMEDIATE WATERSHED
	DRAIN TO BE MAINTAINED
	ACCESS
	DENOTES PROPERTY OWNERSHIP ON BOTH SIDES OF LOT LINE
	APPROXIMATE HECTARES IN WATERSHED
	ASSESSMENT ROLL NUMBER

DESIGNED BY: N.W.M.
 CHECKED BY: H.A.W.
 DRAWN BY: D.C.P.
 CHECKED BY: N.W.M.



SCALE
 0 50 100
 ORIGINAL SCALE
 PLAN 1:5,000

BLACK CREEK DRAINAGE WORKS 2014

REGION OF NIAGARA TOWN OF FORT ERIE
 CITY OF PORT COLBORNE

STEVENSVILLE LOTS

JULY 31, 2014

REVISED:
 JOB NUMBER: 02-082
 DRAWING
6 OF 6



K. SMART ASSOCIATES LIMITED
 CONSULTING ENGINEERS AND PLANNERS
 KITCHENER SUDBURY