



Vale Health and Wellness Centre Fact Sheet November 2012

- The Port Colborne Health & Wellness Centre has been under construction now for eighteen (18) months. YMCA and Subway Restaurants revisions have been incorporated into the design.
- Over the past three (3) months, construction activities included interior and exterior glazing; lighting installation; polishing of concrete flooring throughout the facility; stair construction; installation of drywall; dasherboard and HDPE installations; millwork and site landscaping, concrete sidewalks and asphalt in the parking lot. Interior finishes such as wall panels and painting are ongoing along with tile work throughout the building.
- To maintain safety on the site it is imperative that the public stay away from the construction areas. This work is scheduled to continue throughout 2012.
- Site photos have been included on the back side of this information sheet for reference. The bullets listed below outline the scope of work that is expected to be carried out during the next few months.
 - Pool and washroom tile work – September-December 2012
 - Aluminum windows and curtain wall – September-December 2012
 - Tiling – September-December 2012
 - Painting – November 2012
 - Millwork – November 2012
 - Athletic equipment/Gym dividers – November 2012
 - Washroom fixtures/accessories – November 2012
 - Skate /track flooring –November 2012
 - Acoustic ceilings – November 2012
 - Audio Visual installations – November 2012
 - Slab pull downs – November 2012
 - Signage installation – December 2012
- Visit the City of Port Colborne website at www.portcolborne.ca/page/Health_and_Wellness_Centre for information on the project as it progresses. If you have any questions you can call City Hall at 905-835-2901 ext. 219.



Building main entrance



Gymnasium



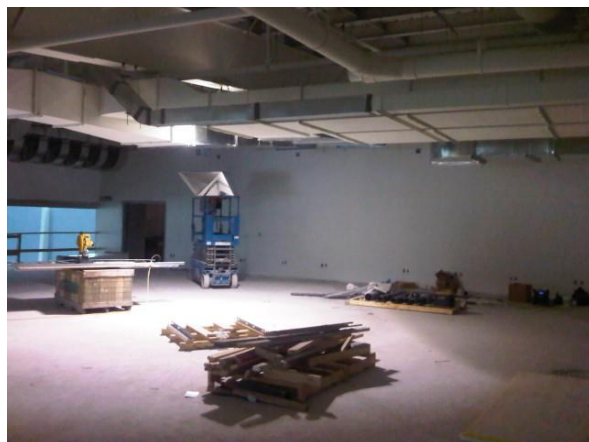
Arena 2 – interior finishes are ongoing.



Arena 1 – interior finishes are ongoing.



Lap pool tiling is nearing completion. Glazing installation is underway.



Finish work is underway in the fitness area.