



PORT COLBORNE

City of Port Colborne Urban Forest Assessment & Management Plan





*A roadmap that creates a **shared vision** for the future of Port Colborne's tree canopy*



Background Research



Street & Park tree (partial) Inventory



Tree Canopy Study: i-Tree Canopy



Communications & Engagement Strategy



Urban Forest Management Plan

Pete Williams, W&A, Project Manager

John McNeil, MUFI, Project Coordinator,
Strategic Planning

Mike Rosen, Consultation Michael Rosen-
Communications & Engagement

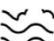
Peter Kuntz, Kuntz Forestry - UTC Canopy
Analysis & Ecologist

Peter Simon, Tree City. *City Building*

Sheila Mayer. Communications, Graphics,
Forestry Support

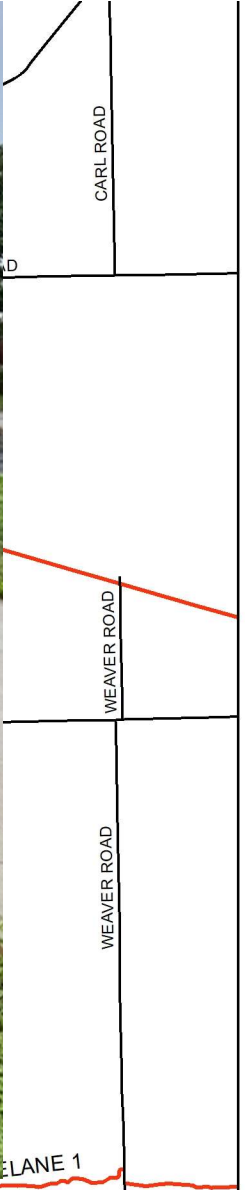
W&A Team

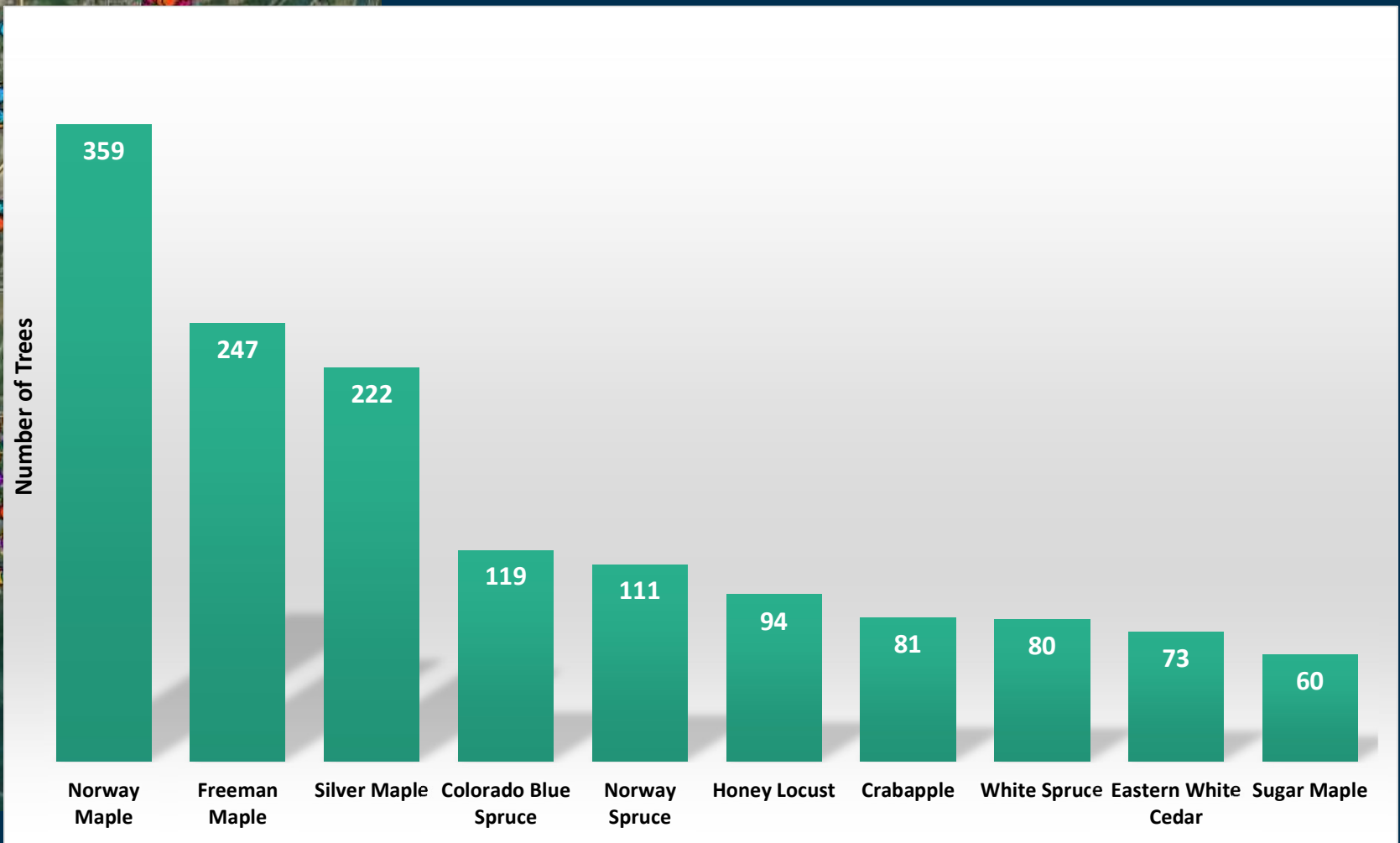
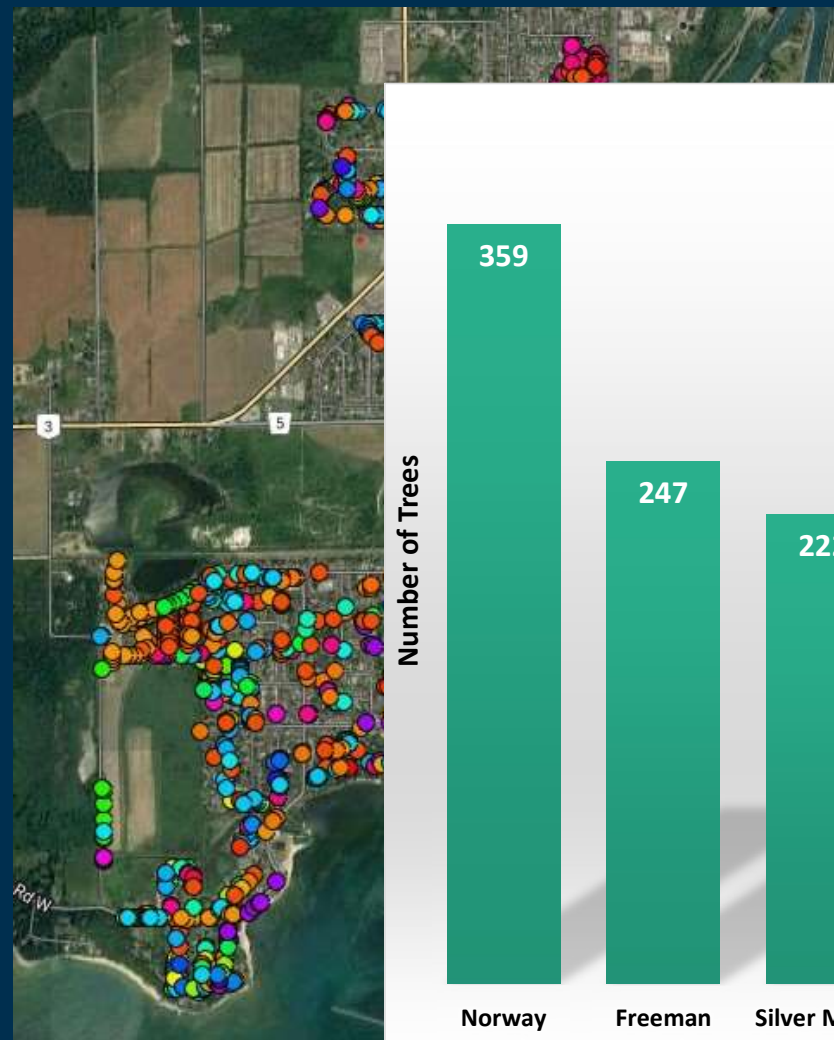
TREES IMPROVE

-  Human Health
-  Economic Development
-  Water Quality
-  Air Quality
-  Public Safety
-  Equity
-  Transportation
-  Education
-  City Planning
-  Smart Cities Tech
-  Urban Wood Reuse
-  Resilience

Urban Vegetation Benefits

- Cooler air temperatures / energy effects
- Socio-economic / Aesthetics
- Air quality improvement
- Water quality improvement
- Greenhouse gas reduction
- UV radiation reduction
- Wildlife habitat
- Noise reduction
- Products: timber, food, fiber, ethanol
- Oxygen production





How much Urban Canopy Cover does Port Colborne have?



10 % Tree Canopy Cover



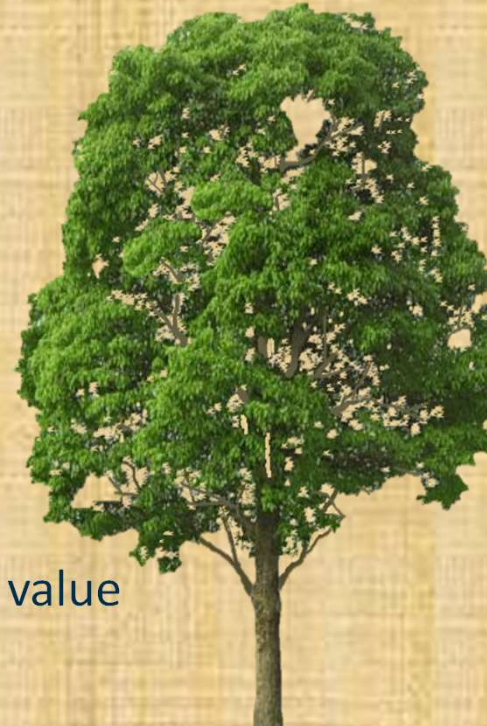
32 % Urban Forest Canopy Cover



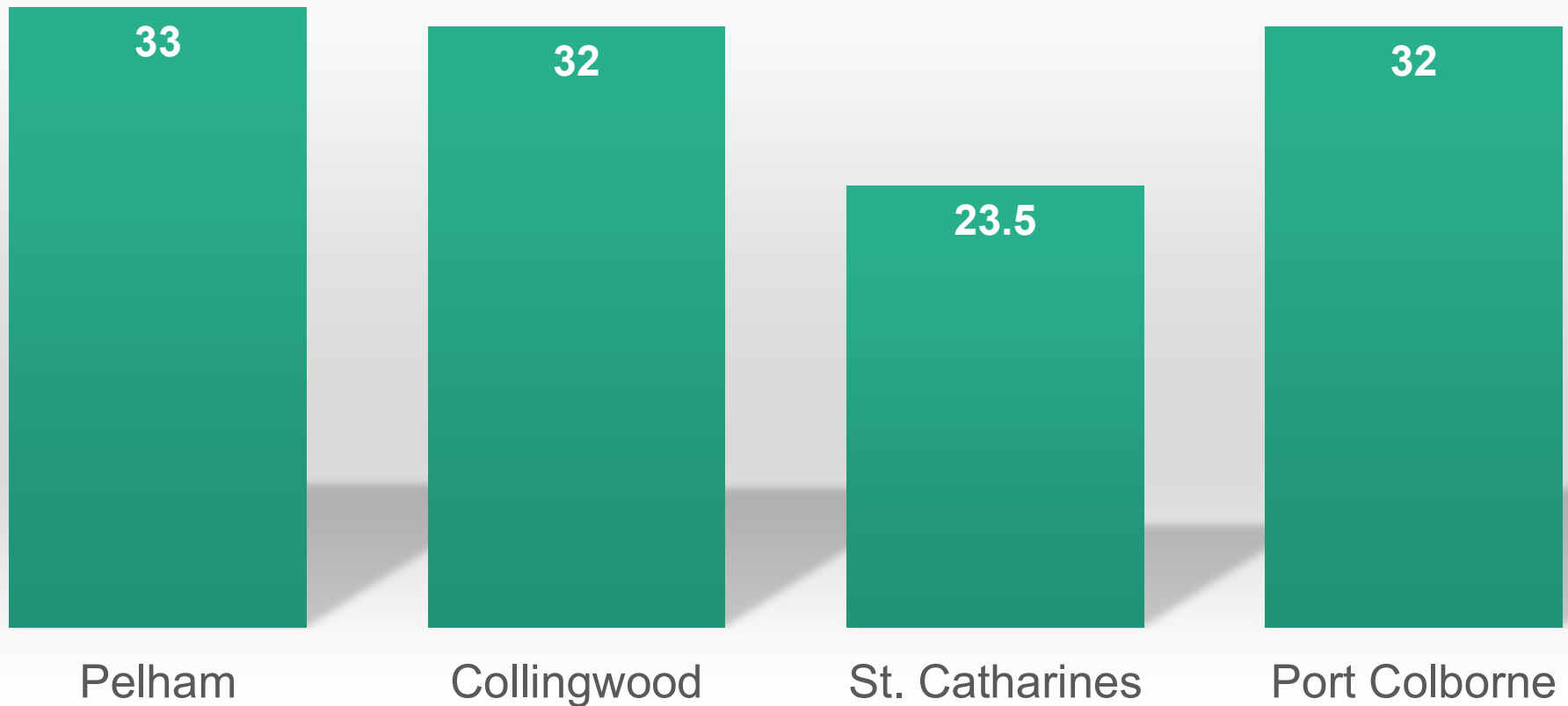
23% of the urban area is plantable space



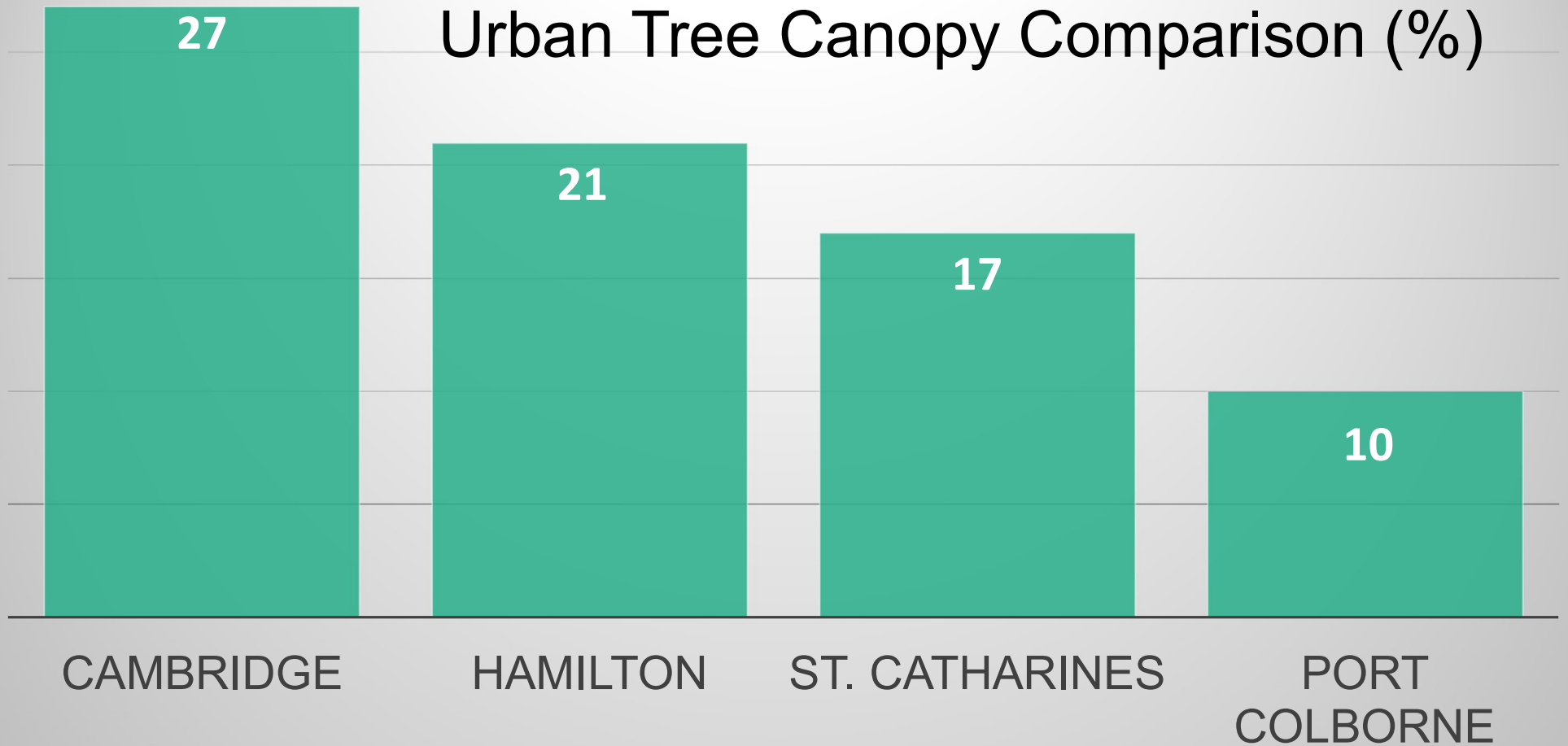
\$6.1 Million per year in ecological service value



Urban Forest Canopy Cover Comparison (%)



Urban Tree Canopy Comparison (%)

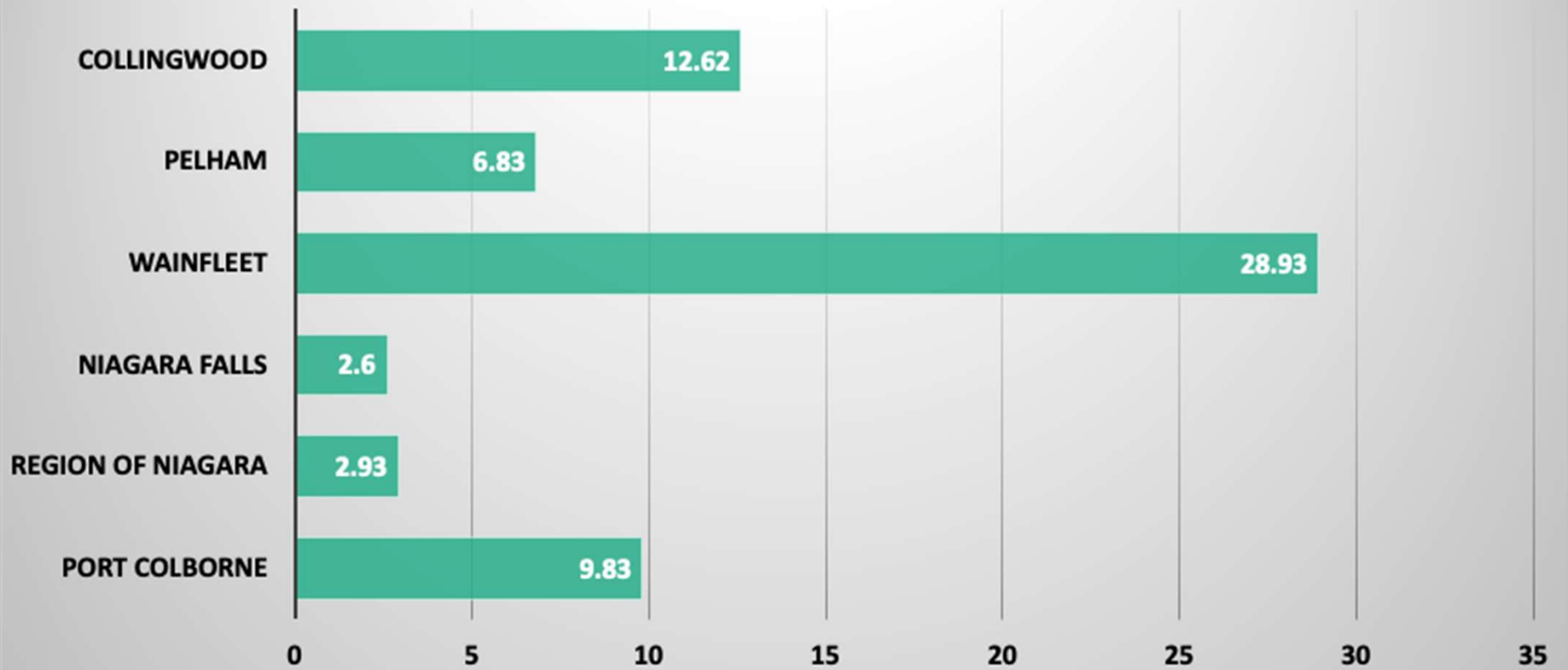


SWOT Analysis

Strengths	Weaknesses
<ul style="list-style-type: none">• Teamwork• Attitude & energy• Community support for this project	<ul style="list-style-type: none">• Historically poor-quality City urban forest management Program• No Urban Forest Management Plan (UFMP) in place across the Corporation (in development)• Risk to public safety caused by lack of a systematic tree inspection program
Opportunities	Threats
<ul style="list-style-type: none">• A new “tree attitude”• Create green infrastructure policies	<ul style="list-style-type: none">• Risk of not complying with the requirements of the <i>Jobs and Prosperity Act</i> by not having an <i>asset management plan and tree inventory</i>• Not in compliance with <i>Municipal Act</i> which requires a <i>tree canopy policy</i>



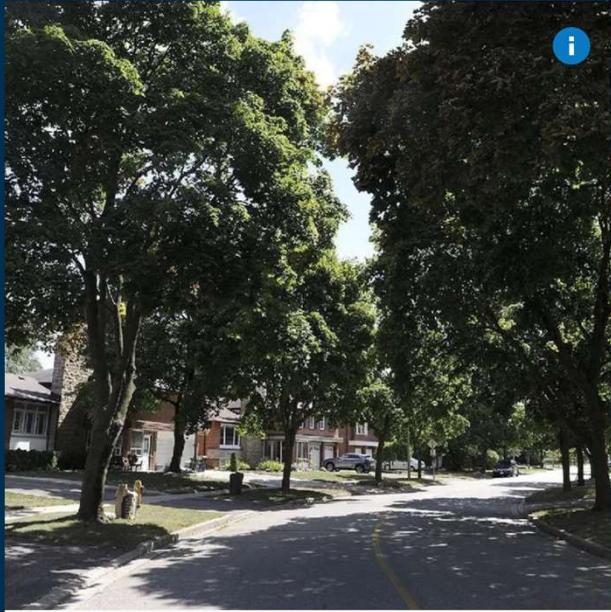
Tree Maintenance \$/Capita (Annual budget for street tree removal + stumping + pruning)



Review Tree By-law 6175/01/15 & Review Tree Installation Policy, 2007

- Do the by-law & policy promote good urban forest management practices?
- Do the by-law & policy conform to the City's Official Plan?
- Do the by-law & policy support tree canopy goals?





LOCAL : NEWS

City of Port Colborne needs your say on an urban forest management strategy

Engagement survey will be available until Jan. 20


PORT COLBORNE
The Leader.

 Set Port Colborne as My Local news




Public Engagement & Communications Strategy

~ listen to the community & stakeholders


PORT COLBORNE

URBAN FORESTRY MANAGEMENT STRATEGY AND PLAN SURVEY

 **Have your say!**

The City of Port Colborne is developing an Urban Forest Management Plan to ensure that its urban/community forest will be sustainably managed for the future health and benefit of its residents, and the environment.

The City of Port Colborne is developing an Urban Forest Management Plan to ensure that its

The City of Port Colborne recognizes and values the environmental, social, cultural, and economic contribution of the urban forest to our community. The City will, in partnership with its residents, businesses and stakeholders work to promote and increase urban forest coverage that is diverse, healthy and a sustained asset for future generations

Key Findings



Tree canopy cover

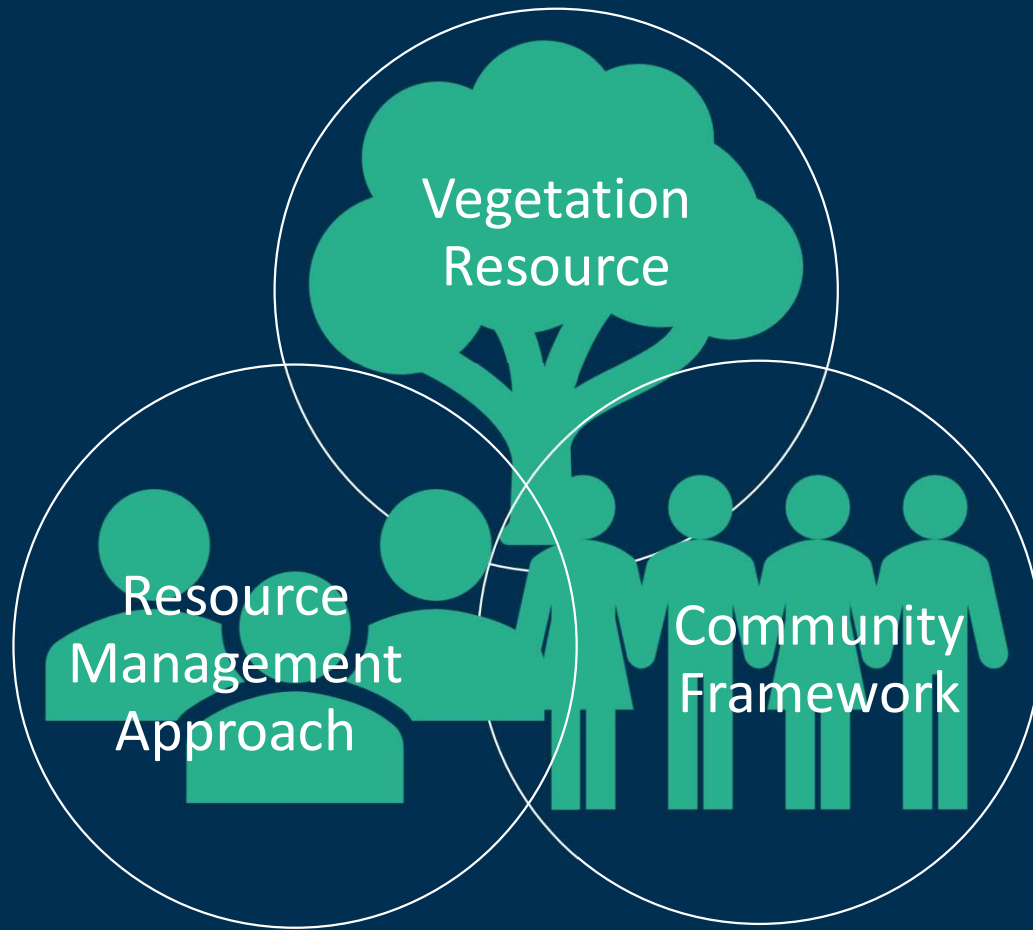


Rate of annual decline in the tree canopy cover




Urban forest is vulnerable





How to Address Key Findings



Strategically plant more trees



Establish Policy Framework



Build staffing budget resource



Transition from reactive to proactive

Build towards a sustainable urban forest





THANK YOU

